

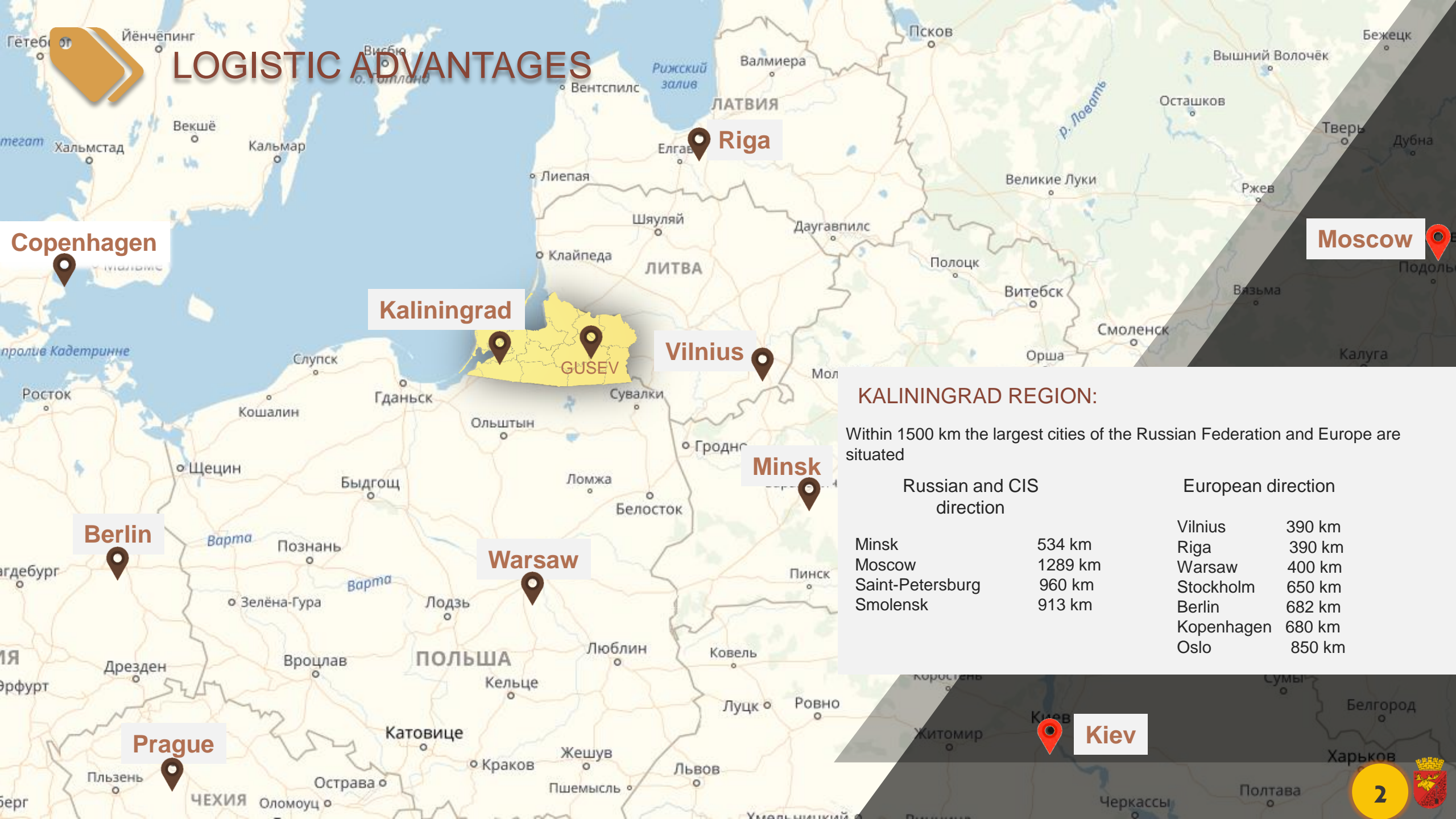


GUSEV

TERRITORY OF THE FUTURE

2020

LOGISTIC ADVANTAGES



Kaliningrad

GUSEV

Vilnius

Minsk

Warsaw

Berlin

Prague

Moscow

Kiev

KALININGRAD REGION:

Within 1500 km the largest cities of the Russian Federation and Europe are situated

Russian and CIS
direction

Minsk	534 km
Moscow	1289 km
Saint-Petersburg	960 km
Smolensk	913 km

European direction

Vilnius	390 km
Riga	390 km
Warsaw	400 km
Stockholm	650 km
Berlin	682 km
Kopenhagen	680 km
Oslo	850 km



LOGISTIC ADVANTAGES

1435mm

1520mm

Transport and logistics
centers



PORT
Kaliningrad

12

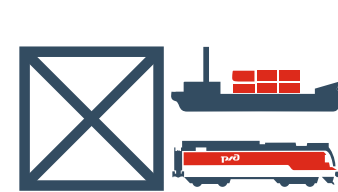
Days from China
to Europe



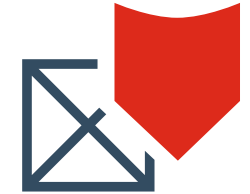
Competitive prices



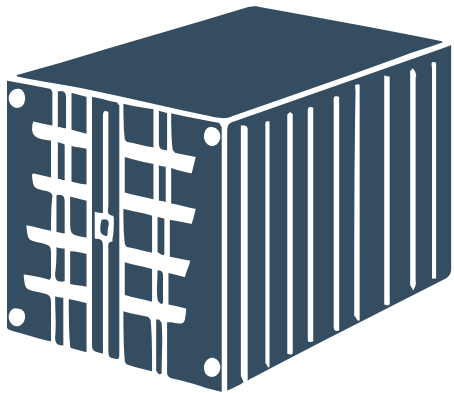
Crossing time
border less than 2.5
hours



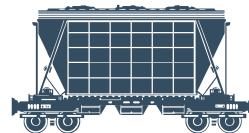
Ability to create
multimodal
shipments



Cargo protection



1,5
million
TEU



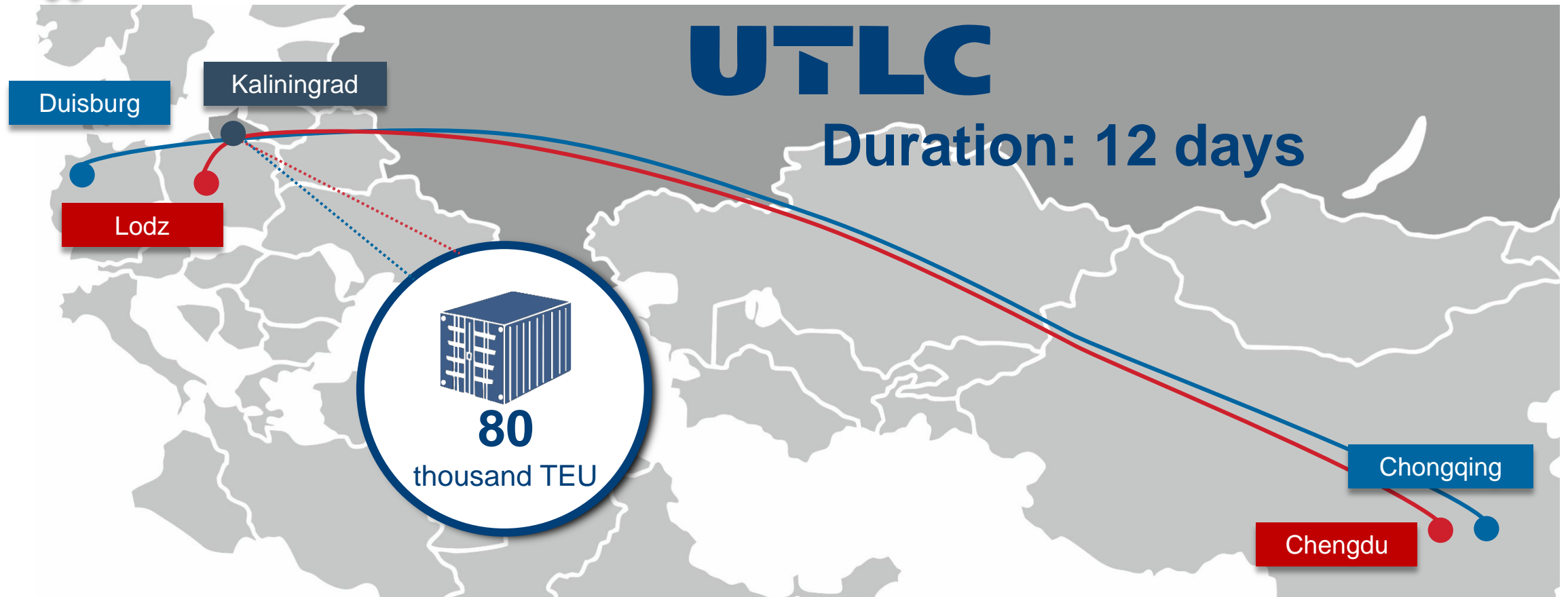
70
million
tons



150
thousand
cars



TRANSPORT CORRIDOR "EAST-WEST"

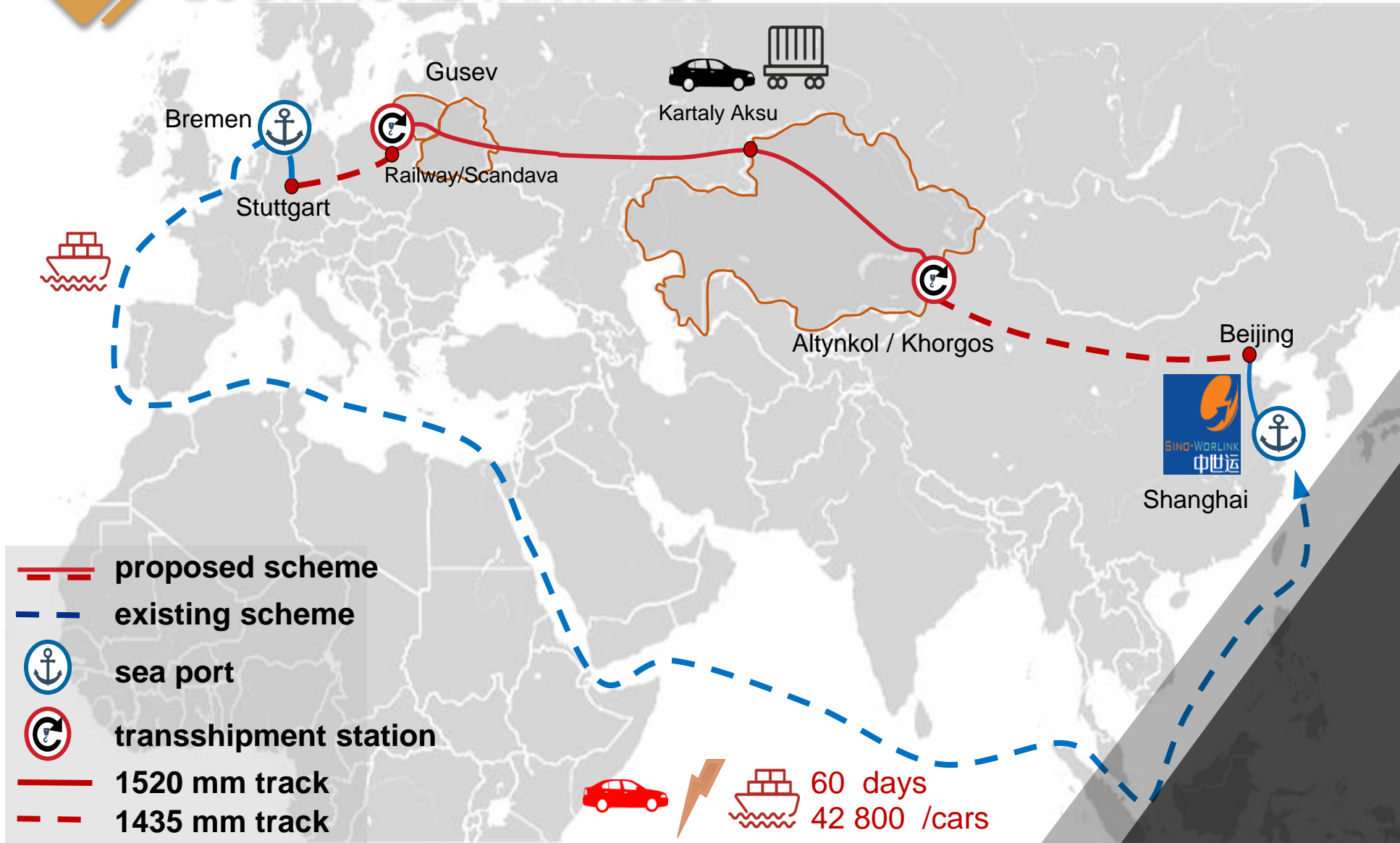


РЖД partners:





LOGISTIC ADVANTAGES



Potential traffic:
50 000 cars
(150 trains) per year

Conditional length of the
composition :
71 wagons

In Train:
41 wagons (328 cars)





SPECIAL ECONOMIC ZONE

01 1 000 000 ₪
15.4 thousand euro
Minimum investment amount in IT and high-tech

02 10 000 000 ₪
153.4 thousand euros
Minimum investment amount in health care

03 45 days
State examination of project
documentation and state ecology
examination

06 for 8 days*
without consular fees
Simplified procedure for issuing Russian visas
(Electronic visa for 3 days)
* since 01.07.2019

05 0%
Utilization fee
for foreign equipment less than
3 years old at the acquisition date

04 7,6%
Reduced insurance premiums
for new jobs

SEZ

11 residents of SEZ are
already working in Gusev

UNDER IMPLEMENTATION:
4 investment projects with
amount **2,8 bln.** RUB

0%
LAND TAX
during the first **5 years**

0%
PROPERTY TAX
during the first **6 years**

0%
PROFIT TAX
during the first **6 years**





SPECIAL ECONOMIC ZONE



50 million rubles

investment project is in the field of:

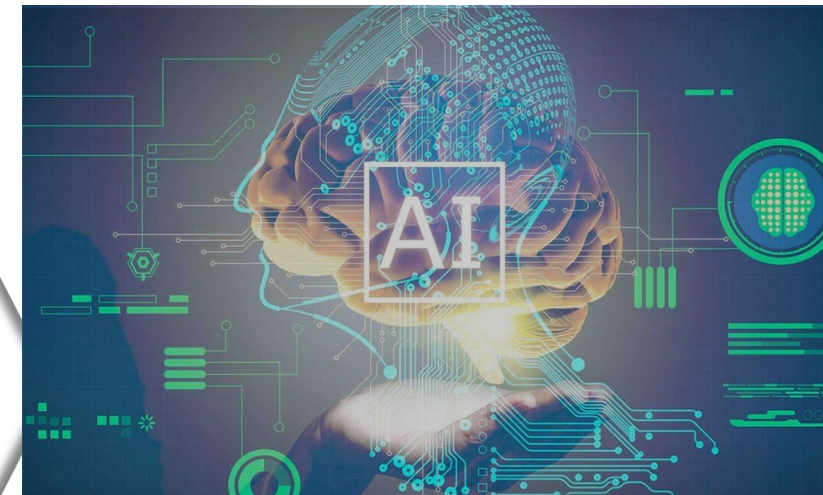
- tourist and recreational activities
- manufacturing industry
- fisheries, fish farming and agriculture



10 million rubles

investment project is in the field of:

- healthcare



1 million rubles

investment project is in the field of:

- computer technology development
- creation of software
- the provision of consulting services in this area and other related services
- information technology, research and development



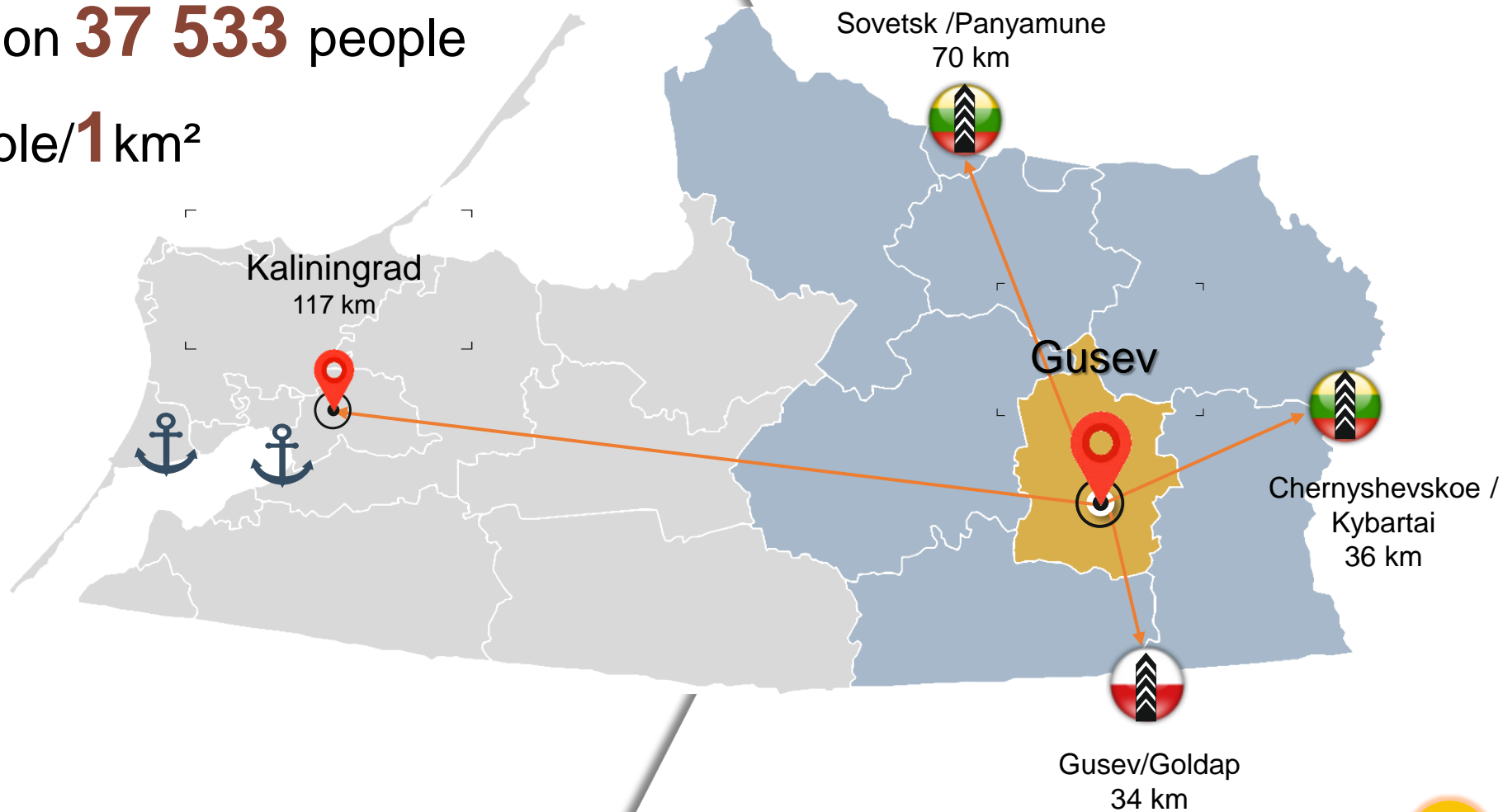


GUSEV: GENERAL CHARACTERISTICS

Total area **64 266** Ha

Population **37 533** people

58 people/**1** km²



**GUSEV -
COMFORT FOR
BUSINESS AND
LIVING**





INDUSTRIAL PARK “MAYAKOVSKI”

Complete necessary
infrastructure

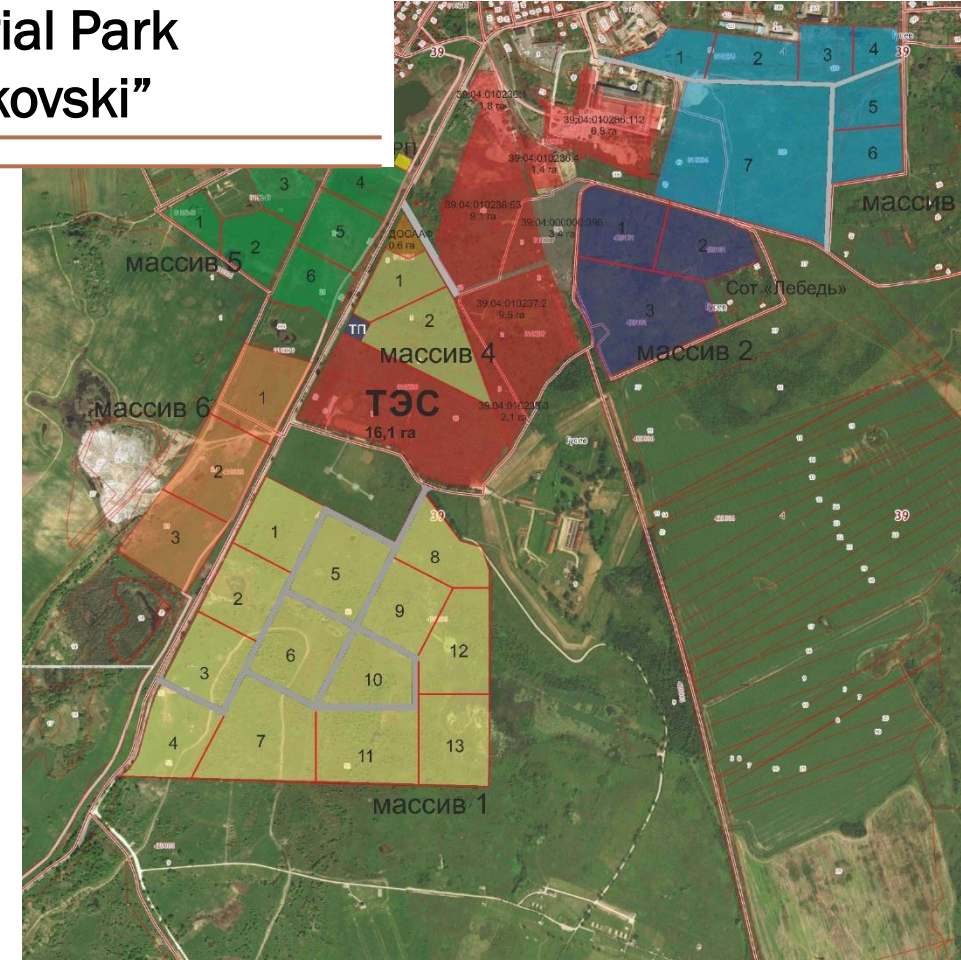
Industrial Park “Mayakovski”

158,6 Ha Park Area

free investment sites

natural gas

free power capacity





AGRO INDUSTRIAL COMPLEX



The main activities of enterprises:

- pork production,
- grain and rapeseed production
- dairy and meat cattle breeding
- sheep breeding
- processing of products.

S - 38,2 thousand Ha

94,0 % of the land is used

Created about **50 farms**

3425 personal farms.



6 large enterprises

55 %

of the total output of urban district
accounted for agriculture

20 %

of the total meat production in the
region

14 %

of the total grain
production in the region



INVESTMENT PROJECTS UNDER IMPLEMENTATION

LLC «Ptitsefabrika Guryevskaya»

A complex for primary underworking, storage and transshipment of grain and oilseeds. The elevator capacity is 131 thousand tons of one-time storage.



1,9 billion RUB



0,661 billion RUB

LLC «Furmanovskoye»

A plant producing feed flour and feed fat from the main production waste of the for slaughter and primary processing of farm animals complex



0,060 billion RUB

LLC «Baltic meat company-3»

Gusevsky meat-and-bone meal plant



0,150 billion RUB

LLC «KB «Electronica»

Construction of a plant for the microelectronic products production

2,771 billions RUB

TOTAL AMOUNT OF INVESTMENTS

**GUSEV -
COMFORT FOR
BUSINESS AND
LIVING**





TECHNOPOLIS GS

5 high-tech enterprises

Total area **230** Ha.

Investments amount **6 bln RUB**

> **1300** workplaces till **2020**

75 000 m² housing for employees.

Developed social infrastructure



300 mln RUB
Investments into the project



1,5 bln RUB
Fund

Venture Fund
GS Venture



Development,
encapsulation and
testing of
microelectronic
products



Production of carbon
nanostructural materials



Production of plastic
and metal details



Production of
electronics under
brand General
Satellite



Production of
corrugated cardboard,
corrugated packaging
and moulded tare from
paper pulp





THE INTERNATIONAL COOPERATION

18 PARTNER CITIES
IN 4 COUNTRIES



Raise funds within the framework of Cross-Border Cooperation Programmes 2014-2020
276,8 mln. RUB



2018-2020

GUSEV -
COMFORT FOR
BUSINESS AND
LIVING

2 international
Programmes

4 calls of proposals

5 projects are under
implementation

The maximum
rate of approved
project applications
in the region has
been reached



3,188
mln. RUB



POLAND - RUSSIA
CROSS-BORDER
COOPERATION PROGRAMME
2014-2020

273,58
mln. RUB

According to the Government
international activities
assessment of municipalities in
2020, the municipality "Gusev city
district" took the **1st place**
among the municipalities of the
Kaliningrad region.



COMFORT ENVIRONMENT FOR LIVING



370 km
of roads,
5,5 km
of bicycle paths
46 km
of pavement



89 objects of a
culture heritage



7 kindergartens
5 educational institutions
2 institutions of
occupational education



Modern health
services



15 big international
events
40 000
tourists per year
7 hotels and hostels





COMPLETED PROJECTS



> 26 bln. rub
real sector Investments



> 1,6 bln. rub
social investments



47 745 m²
housing commissioned



352 mln. rub
projects Implementation in 2019





CONTACT US



www.admgusev.ru



prom@admgusev.ru



+7 (40143) 3-60-11

