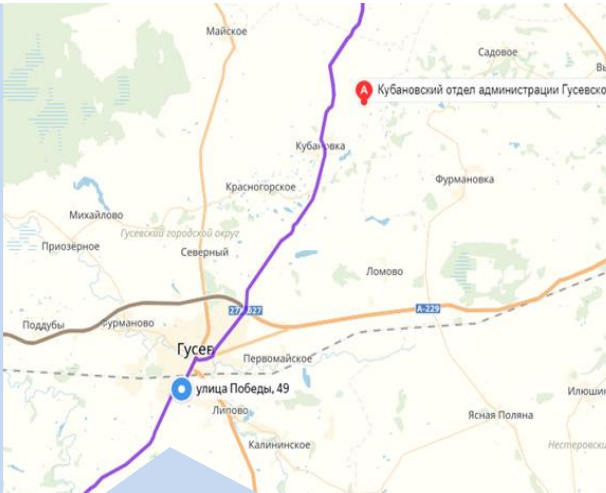


# PASSPORT OF INVESTMENT SITE No. 1

**North-east from Kubanovka village (3 km)**

**Land plot  
Gusev city district  
Kaliningrad region**



**Cadastral No.:**  
39:04:390004:33  
**Area:** 52 100 м<sup>2</sup>  
**Owner:** regional property  
**Commentary:** land for placement of agricultural purpose objects and for agricultural lands



## GAS

remote source connection  
approximately 4-5 km from high and low pressure gas pipelines in Kubanovka village



## ELECTRICITY

remoteness of the source of connection  
approximately 4-5 km from the electrical substation of the settlement of Kubanovka



## WATER SUPPLY

water network is on distance 2.8 km from the site



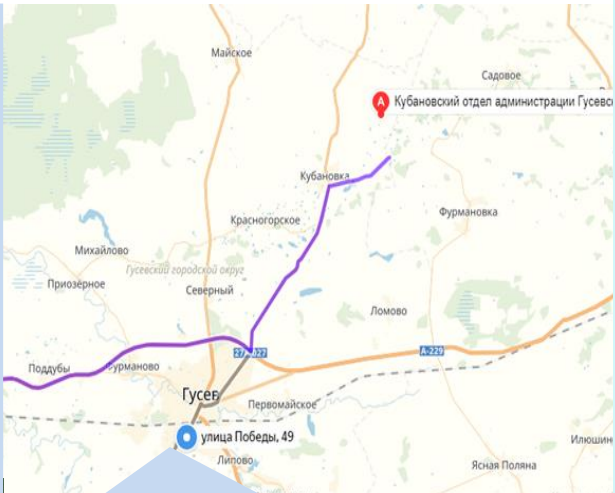
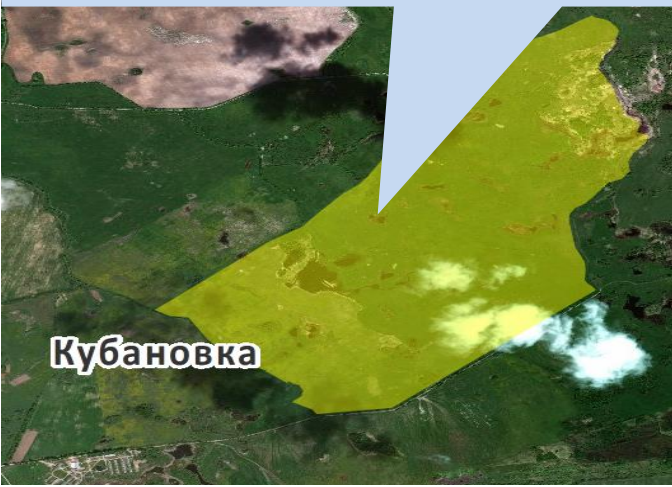
## SEWERAGE SYSTEM

local treatment facilities

# PASSPORT OF INVESTMENT SITE No. 2

**North-east from Kubanovka village (1,3 km)**

**Land plot  
Gusev city district  
Kaliningrad region**



**Cadastral No.:**  
39:04:390004:30  
**Area:** 2 616 249 m<sup>2</sup>  
**Owner:** regional property  
**Commentary:** land for agricultural purposes



## GAS

remote source connection  
approximately 1-2 km from high and low pressure gas pipelines in Kubanovka village



## ELECTRICITY

remoteness of the source of connection  
approximately 1-2 km from the electrical substation of the settlement of Kubanovka



## WATER SUPPLY

water network is on distance 1,4 km from the site



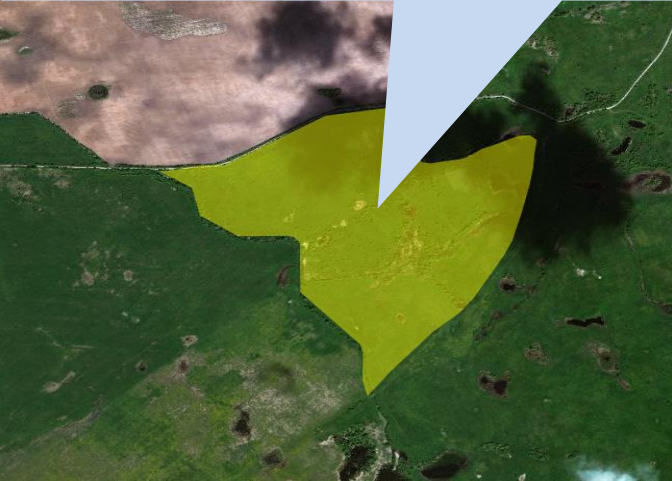
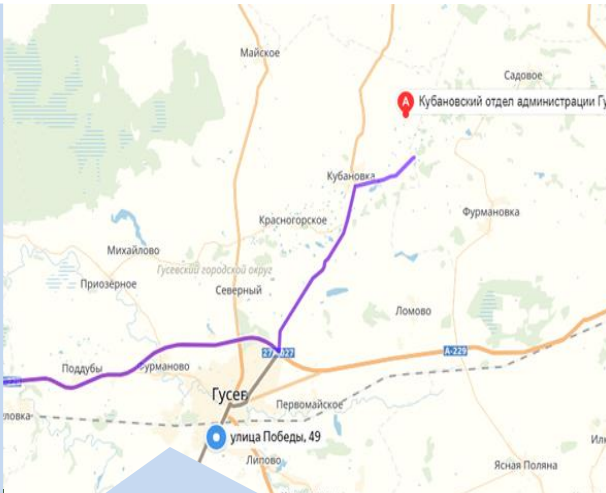
## SEWERAGE SYSTEM

local treatment facilities

# PASSPORT OF INVESTMENT SITE No. 3

**North-east from Kubanovka village (2,3 km)**

**Land plot  
Gusev city district  
Kaliningrad region**



**Cadastral No.:**  
39:04:390004:31  
**Area:** 436 100 m<sup>2</sup>  
**Owner:** regional property  
**Commentary:** land for agricultural purposes



## GAS

remote source connection  
approximately 2-3 km from high and low pressure gas pipelines in Kubanovka village



## ELECTRICITY

remoteness of the source of connection  
approximately 2-3 km from the electrical substation of the settlement of Kubanovka



## WATER SUPPLY

water network is on distance 2.3 km from the site

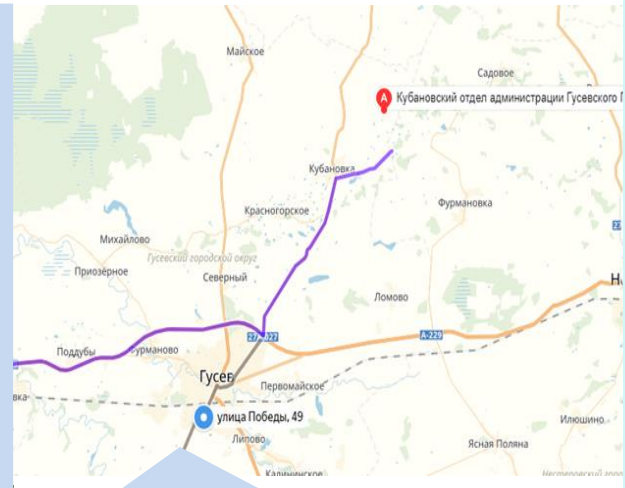


## SEWERAGE SYSTEM

local treatment facilities

# PASSPORT OF INVESTMENT SITE No. 4

**North-east from Kubanovka village (3,3 km)**  
**Land plot**  
**Gusev city district**  
**Kaliningrad region**



**Cadastral No.:**  
39:04:390004:27  
**Area:** 208 900 м<sup>2</sup>  
**Owner:** regional property  
**Commentary:** land for agricultural purposes



## GAS

remote source connection  
approximately 3 km from high and low pressure gas pipelines in Kubanovka village



## ELECTRICITY

according to specifications for technological connection depending on the parameters of energy-consuming equipment



## WATER SUPPLY

water network is on distance 3,3 km from the site



## SEWERAGE SYSTEM

local treatment facilities